

NEWS



Issue 1- OCT 24

Dear Parents, Carers, and Pupils,

We are now a month into the new school year, and we hope that you and your children have settled back into school routines smoothly. It's been wonderful to see how quickly the pupils have adjusted to their new classes and begun engaging with their learning.

A warm welcome once again to our Year 3 children and all new pupils across other year groups—we are thrilled to have you as part of the Meadowhead Junior School family.

As you may know, Mr. Chris Dugdale has officially taken up his position as our new Executive Headteacher, overseeing both Meadowhead Junior School and Hoddlesden St Paul's CE Primary School.

We are already seeing his positive impact on the school community, and we are excited for the future under his leadership.



SAVE THE DATES



Parents' Evenings 3.30pm to 6.20pm

- **Tuesday 19th November 2024**
- **Wednesday 20th November 2024**

We have increased to 10 minute slots and children's books will be available in the hall prior or after your slot. Bookings will be online from Thursday 17th October. A link will be emailed to parents, please check email address is correct with the school office.

DIARY DATES

FRI 4 OCT

Flu Immunisations

MON 7 OCT

Junior Jam Day

Yr 6 pupils at St Bedes' (invite only)

THU 10 OCT

World Mental Health Day- Chn to wear something YELLOW with school uniform.

MON 14 OCT

Junior Jam Day

Behaviour Treat sometime this week.
Book Sale -After school, raising money for the Values Committee Events

WED 16 OCT

Bike ability Year 5 & 6 (confirmation children only)

Parents' Evening Times released at 12pm

THU 17 OCT

Bike ability Year 5 & 6 (confirmation children only)

FRI 18 OCT

School Closes at 3.20pm

MON 21-25 OCT

HALF TERM

MON 28 OCT

INSET DAY (School Closed to children)

TUE 29 OCT

Black History Week- Values Week

Great War Workshop (Year 6)

Blackburn Rovers Community Team in school all week. More info to follow

THU 31 OCT

Pumpkin Competiton Judging

Autumn/Halloween Activity Day



It is with mixed emotions that I share the news of Mr. Crowther's departure from Meadowhead after 12 years of dedicated service, at the end of this half term. Sadly, prior to my arrival, Mr. Crowther had secured a new teaching role closer to home. Over the half term, Mr. Crowther has been an incredible support to me, his class, and the wider school life.

As a Claret, a friend, a foodie, and a true sportsman, Mr. Crowther is an exceptionally talented teacher and leader. His passion for education and his commitment to the school community over the past decade are truly commendable. He has positively impacted the lives of so many pupils, colleagues, and families, leaving behind a legacy of dedication, compassion, and excellence.

While we are sad to see him go, we know that this new chapter in his career will bring him great success, and we hope you will all join me in wishing Mr. Crowther the very best in his future endeavors.

Thank you, Mr. Dugdale

goodbye

It is with deep gratitude that we bid farewell to Mrs. Evans, our beloved Welfare Assistant, who has dedicated over 19 years of service to our school.

Mrs. Evans has been a constant source of care and support for well over 5,000 children. From serving meals with a smile to checking in with pupils, and playing out in all weathers, rain or shine.

Her unwavering dedication to the well-being of our children has left an indelible mark on the lives of so many. Mrs. Evans has always been there for the children, offering kindness, encouragement, and comfort whenever it was needed. Her presence has truly been a pillar of our school community.



As she now steps into a well-deserved, full retirement, we want to extend our heartfelt thanks for everything she has done for the school and its children over the years. Mrs. Evans, we wish you the very best and happiest retirement—filled with relaxation, joy, and all the things that bring you happiness.

Timetable and Daily Routine

The school day will remain the same, but it is crucial to note that learning begins promptly at 8:50 am, starting with English and Reading. Assemblies will now be held at a different time during the day. ***Punctuality and attendance are more important than ever, as children who are late will miss out on essential learning. Persistent lates may result in unauthorised attendance marks, leading to a potential penalty notice.***

Uniform Expectations

Uniform expectations have been shared on our Facebook page, but here are the key changes and non-negotiables:

- Children may wear school shoes and/or black trainers. Trainers must be completely black, and there are no exceptions to this rule regardless on a PE Day or not.
- Hairstyles: We kindly remind parents that hairstyles should be neat and appropriate for school. Brightly colored hair, extreme cuts, and patterns shaved into the hair are not permitted. Long hair should be tied back for safety reasons.
- PE Kits: On days when children have PE, they are expected to wear the appropriate PE kit. This includes a plain white t-shirt, black or navy shorts or tracksuit bottoms, school jumper, and **BLACK** trainers. Please ensure your child follows this on their designated PE days. This will be enforced after half term to allow parents and carers to source the correct uniform

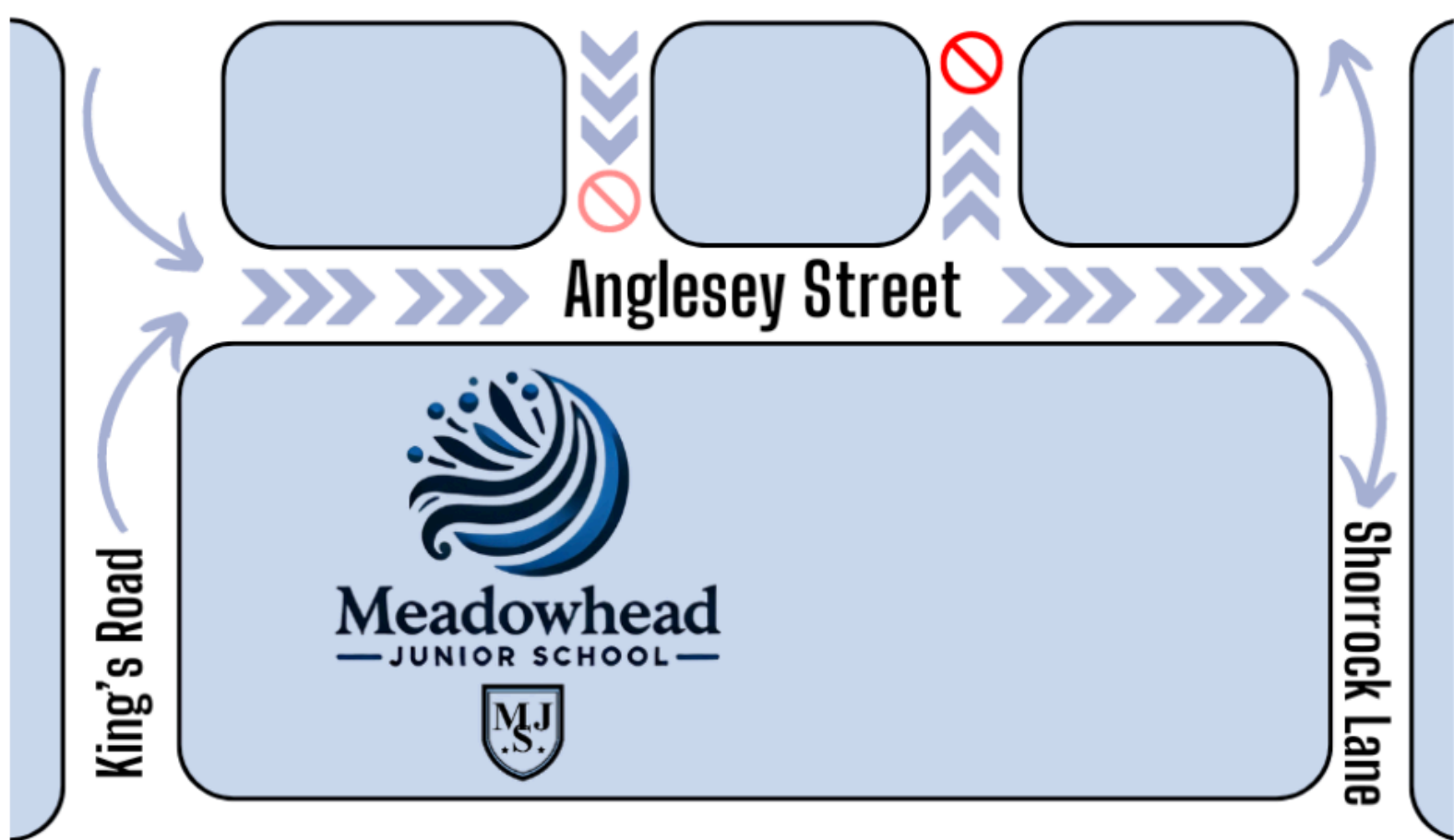
Behaviour Policy

We are implementing our Meadowhead Hero behaviour approach, which has been detailed on Facebook. Dojo points will be an integral part of this, and to ensure consistency, family access to the Dojo system has been revoked.

Any messages should now be directed through the school office and will be passed on to the relevant staff members.

The Governing Body have now approved the schools Suspension and Exclusion policy, this can be found on the school website.

Livesey Branch Road



We would like to extend our gratitude to all those who consistently follow our unofficial one-way system during school drop-off and pick-up times. By adhering to this system, we help maintain a safe, calm, and orderly process for everyone.

Key Reminders:

- Please use Anglesey Street to enter, following the directional arrows as shown on the diagram.
- Livesey Branch Road serves as the primary approach route.
- Exiting should occur via Shorrock Lane to avoid congestion.
- Remember, the section marked with the red symbol is a no entry point, and we ask that everyone respect this.

Thank you again for your cooperation and understanding. Your efforts help create a smoother, safer experience for all involved.





HIGH SCHOOL ADMISSION

High Aspirations, Bright Futures

🌟 Looking for school admissions in Blackburn with Darwen? 🌟

Visit our easy-to-use online portal: [Blackburn Synergy Web!](#) 🎓👤


Whether you're seeking childcare options, school placement, or family support services, our Synergy Web portal has everything you need in one place. Quick, convenient, and tailored to your needs.

- ✅ Find trusted childcare providers
- ✅ Access school admissions info
- ✅ Explore local family support programs

Take the next step for your family today – click the link and discover what's available in your area! 🌍💻



#BlackburnWithDarwen #FamilySupport
#ChildcareServices #SchoolAdmissions



Just a quick reminder that secondary school admissions are now open! If your child is transitioning to high school, please make sure to submit your applications on time.

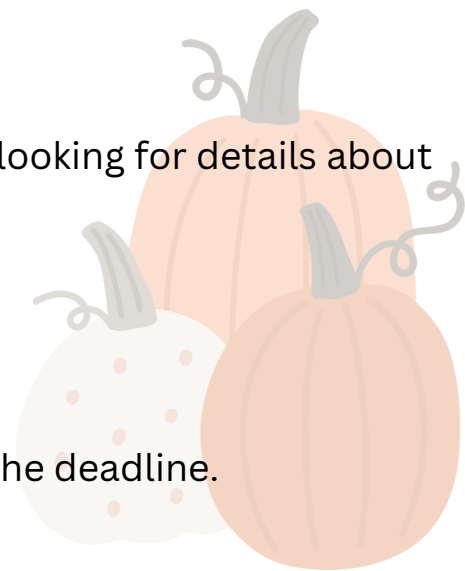
Visit the Blackburn with Darwen admissions portal on the [Blackburn.gov.uk](#) website for all the information and resources you need to apply:

[🔗 Blackburn with Darwen Admissions Portal](#)

Whether you're seeking advice on the admissions process or looking for details about local schools, the portal offers:

- ✅ Step-by-step guidance on applying for school places
- ✅ Important deadlines and updates
- ✅ Links to trusted resources for making informed decisions

Don't miss out! Ensure your application is submitted before the deadline.





PUPIL LEADERSHIP TEAM

High Aspirations, Bright Futures



Head Boy



Head Girl


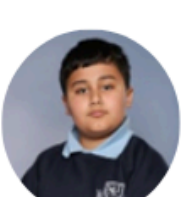


Deputy
Head Boy



Deputy
Head Girl

VALUES COMMITTEE



We are delighted to announce the results of our recent elections for the Pupil Leadership Team and the Values Committee. After a democratic process in which all eligible pupils participated, we are proud to introduce the pupils who will represent our school community in these leadership roles.

Pupil Leadership Team

These pupils have been chosen for their dedication to upholding our school's values and their commitment to setting a positive example for their peers.

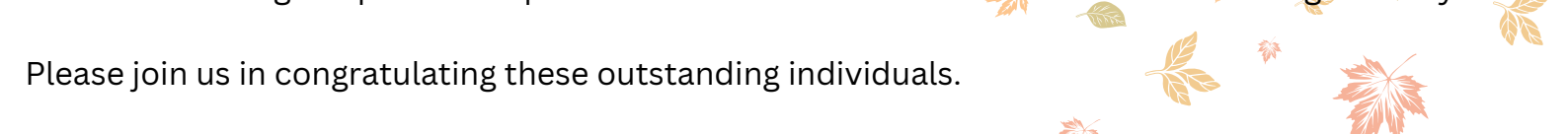
Values Committee

The Values Committee will be responsible for promoting the core values of our school, ensuring that these values are reflected in all aspects of school life.

These young leaders will play an integral role in shaping our school environment, leading by example, and contributing to the well-being and success of all. Their roles include assisting in school events, organising activities that reflect our school's values, and providing a voice for the school body.

We are extremely proud of all the pupils who put themselves forward for these roles, and we look forward to seeing the positive impact these elected leaders will have over the coming school year.

Please join us in congratulating these outstanding individuals.



Updates- Attendance

Firstly, I would like to express my gratitude to the vast majority of parents who consistently prioritise their child's education by ensuring their regular attendance at Meadowhead Junior School. Your commitment to their education is commendable, and I would like to thank you for your continued support in this matter. By attending school as much as possible, you are playing a vital role in your child's academic progress and overall development.

I would like to remind all parents that holiday leave requests must be submitted in advance of the leave date. Please be aware that if the number of unauthorised absences exceeds the specified limit, penalty notices will be issued following the absence. It is crucial that we work together to prioritise your child's education and minimise any disruptions to their learning journey.

Once again, I would like to express my gratitude to those parents who consistently prioritise their child's education and support our efforts to maintain a positive and productive learning environment. By working together, we can ensure that every child at Meadowhead Junior School receives the education they deserve.



Did you know? Late marks will be given and poor punctuality could generate a penalty notice?



Dogs and Parking

A gentle reminder that sadly we cannot allow any dogs (regardless of size or age) on the school premises. This is both on the playground and around the school building.



PARKING

There has been an increase in parking issues, in and around school. Highway Code breaches are as follows:

- Parking/stopping on yellow zig zag lines.
- Parking on a single yellow line without a blue badge.
- Parking across driveways
- Leaving your car on whilst you are parked up.

