

# NEWS

Issue 16- Feb26



## Welcome

Dear Parents, Carers, and Pupils,

At long last we have seen some sunshine and been able to go outside without a coat over the last week or so! The change in weather signals the run up to Easter and there is a lot going on over the next few weeks before the Easter break.

Throughout January and February the children and staff were extremely busy with class assemblies, behaviour treats and attendance rewards. Thank you to everyone who attended the class assemblies, it great to see such wonderful support.

Please take note of the key dates on the right and check the Arbor app regularly for further updates. The most recent key dates are displayed at all entrances around school.

Thank you for your continued support.

## DIARY DATES

**5th March:** World book day

**13th March:** 4LG assembly at 10:20am

**13th March:** Non-uniform day in exchange for an Easter egg donation for Chocolate bingo.

**20th March:** Library bus visits school

**20<sup>th</sup> March:** Red Nose Day.

**WC 23<sup>rd</sup> March:** Behaviour treat one day this week

**26<sup>th</sup> March:** Chocolate bingo. More details to follow.

**26<sup>th</sup> March:** Year 4 & 5 Science workshop

**27th March:** School closes for Easter at 3:30





## Behaviour Treat

*High aspirations, Bright futures*  
The children had a great time during our behaviour treat, bouncy castle dodge ball! It was a great way to reward the children for being Meadowhead heroes and always being ready to learn. The next one will come around quickly and its a brand new one!

MEADOWHEAD HEROES

- BE SAFE
- BE READY
- BE YOU
- BE RESPECTFUL



# Football league winners!

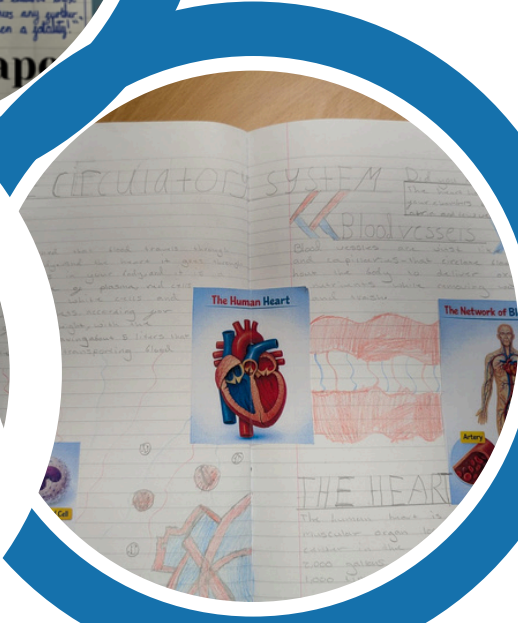


Year 5 & 6 League Champions



# A recap in photos!

*High aspirations, Bright futures*  
Class assemblies, wonderful writing and much more. Here are a few photos of what has been happening over the last month.



DFE 23.02.26

# WHITE PAPER



*You may have seen in the news that the DFE released an education white paper today.*

*A white paper sets out proposals and possible changes in the future but there are no immediate changes.*

*What follows is a consultation period that involves government, schools, parents and wider professionals that work within the education system.*

*If there are any changes in the future to how school runs or operates as a result of the white paper, we will communicate this with all our school community.*

*As always, thank you for your support.*





# Attendance!



We have been recognised for our attendance and have placed in the top 25% of similar schools in England! Thank you to everyone for their continued support to get their children in school everyday.



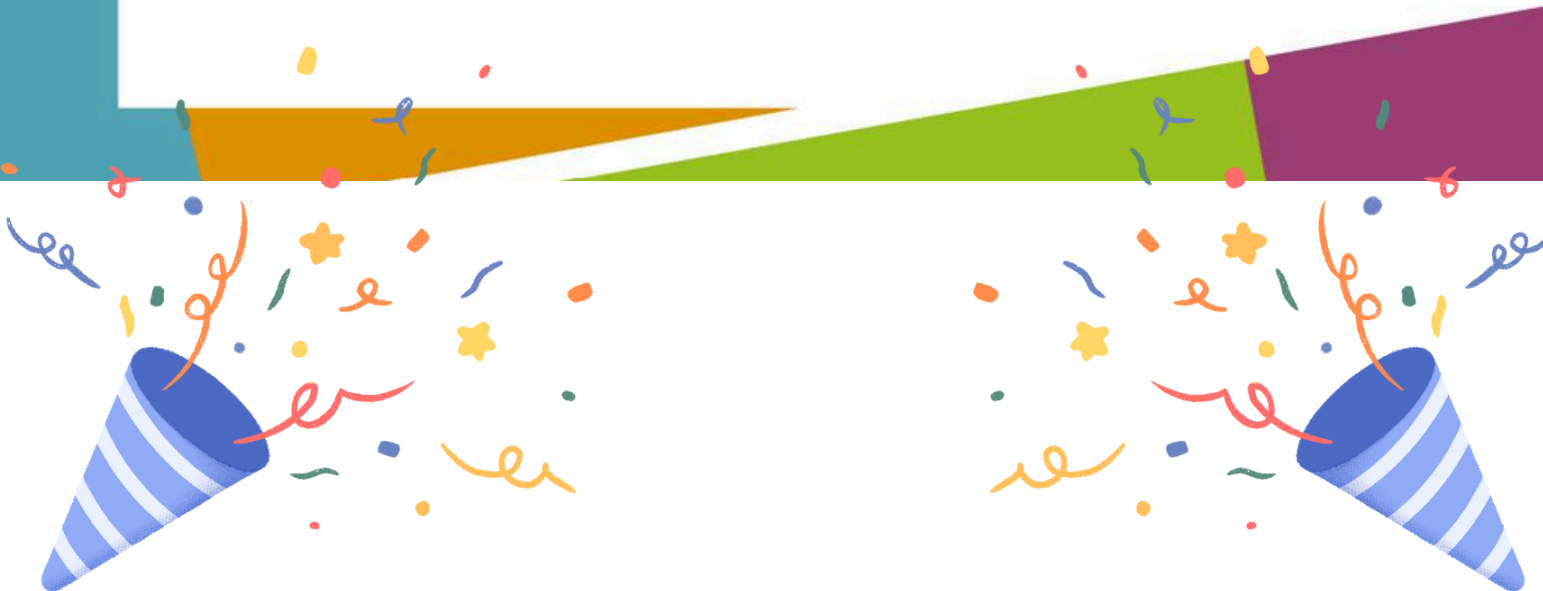
## National School Attendance Award

2025/26 Autumn Term



*Meadowhead Junior School*

*Top 25% of similar FFT Primary Schools in England*



# Uniform

I would like to thank you all for sending your children into school wearing the correct uniform. Children look smart, wearing the correct items and are ready to learn. Maintaining the high uniform standards is an important aspect of school life, and is crucial in creating a positive and conducive learning environment for all our students. Your assistance in upholding these standards is greatly appreciated.

If any families require support in purchasing school uniform items, please do not hesitate to reach out to the school office. We are here to assist and ensure that every child has access to the necessary uniform pieces.

Thank you for your ongoing cooperation and support in this matter. Together, we can continue to uphold the values and standards that make Meadowhead Junior School a place where every child can thrive and succeed.

Should you have any questions or concerns regarding the school uniform policy, please feel free to contact the school office.

**Children should wear black shoes or trainers for school.**



# What Parents & Educators Need to Know about WHATSAPP



## WHAT ARE THE RISKS?

WhatsApp is a free messaging app owned by Meta, allowing users to send text and voice messages, share multimedia, make video calls, and chat in groups. With end-to-end encryption, only the sender and receiver can view messages. This may offer privacy, but it also comes with risks that parents and educators need to be aware of.

### GROUP CHAT PRESSURES

Group chats enable multiple users to message in the same space, but this can also make it easier for young people to feel excluded or overwhelmed. Negative comments can escalate quickly, and young people may feel pressure to respond or stay engaged even when the conversation is uncomfortable or upsetting.

### EXPOSURE THROUGH CHANNELS

'Channels' are an optional feature that allows users to follow updates from public figures or organisations; however, there is no way to block this feature or filter its content by age. Young users may encounter adult or distressing content, including misinformation and harmful ideologies.

### SCAMS TARGETING YOUNG USERS

Scammers are increasingly using WhatsApp to trick users into sharing personal information. Common scams include fraudsters posing as family members in an emergency or tricking users into revealing security codes. These can lead to identity theft or access to private conversations.

### UNWANTED CONTACT AND LOCATION SHARING

WhatsApp users can share their live location, and if not managed carefully, this can allow others – even those in mutual groups – to track someone's whereabouts. Also, without the right privacy settings, young users may be contacted by strangers.

### DISAPPEARING AND HIDDEN MESSAGES

WhatsApp offers features like disappearing messages and 'Chat Lock', which can give users a false sense of security. While intended to protect privacy, they can be used by young users to hide inappropriate conversations or content, making it harder for adults to spot potential issues.

### COMMERCIAL AND AI CONTENT

WhatsApp now includes ads in the 'Updates' feed and has introduced an AI assistant – Meta AI – across the app, which cannot be removed. These additions raise concerns about targeting, privacy, AI use, and the type of content children and young people might interact with.

...ONLINE...

ONLINE

SECRET CODE

## Advice for Parents & Educators

### REVIEW PRIVACY SETTINGS TOGETHER

Help young users check who can see their profile photo, status, and location. Activate the 'Silence Unknown Callers' setting and set group chat invitations to 'My Contacts' or 'My Contacts Except...' for added safety.



### TEACH HOW TO SPOT SCAMS

Encourage caution around unusual and unexpected messages, especially if they involve money or codes. Help young users understand the signs of scams and what to do if they receive a suspicious message. Enable two-step verification to add an extra layer of protection.



### BE OPEN ABOUT HIDDEN CHATS

Discuss why children and young people might use features like disappearing messages or 'Chat Lock'. Encourage them to share if something made them uncomfortable, even if the messages are gone. Let them know that privacy should not mean secrecy.



### TALK ABOUT ADVERTISING AND AI

Explain that WhatsApp now includes ads and AI tools. Discuss the difference between genuine and sponsored content, and the potential for AI to share inaccurate or age-inappropriate responses. Encourage young users to think critically before trusting or interacting with these features.



### Meet Our Expert

Dr Claire Sutherland is an online safety consultant, educator and researcher who has developed and implemented anti-bullying and cyber safety policies for schools. She has written various academic papers and carried out research for the Australian Government comparing internet use and sexting behaviour of young people in the UK, USA and Australia.



See full reference list on our website

# Updates- Attendance

Firstly, I would like to express my gratitude to the vast majority of parents who consistently prioritise their child's education by ensuring their regular attendance at Meadowhead Junior School. Your commitment to their education is commendable, and I would like to thank you for your continued support in this matter. By attending school as much as possible, you are playing a vital role in your child's academic progress and overall development. **School opens at 8:40!**

I would like to remind all parents that holiday leave requests must be submitted in advance of the leave date. Please be aware that if the number of unauthorised absences exceeds the specified limit, penalty notices will be issued following the absence. It is crucial that we work together to prioritise your child's education and minimise any disruptions to their learning journey.

Once again, I would like to express my gratitude to those parents who consistently prioritise their child's education and support our efforts to maintain a positive and productive learning environment. By working together, we can ensure that every child at Meadowhead Junior School receives the education they deserve.

**Its good to be on time!  
School opens at 8:40**



**Did you know? Late marks will be given  
and poor punctuality could generate a penalty notice?**



# Dogs and Parking

A gentle reminder that sadly we cannot allow any dogs (regardless of size or age) on the school premises. This is both on the playground and around the school building.



## PARKING

We would like to extend our gratitude to all those who consistently follow our unofficial one-way system during school drop-off and pick-up times. By adhering to this system, we help maintain a safe, calm, and orderly process for everyone.

Key Reminders:

- Please use Anglesey Street to enter, following the directional arrows as shown on the diagram.
- Livesey Branch Road serves as the primary approach route.
- Exiting should occur via Shorrock Lane to avoid congestion.
- Remember, the section marked with the red symbol is a no entry point, and we ask that everyone respect this.

Thank you again for your cooperation and understanding. Your efforts help create a smoother, safer experience for all involved.

